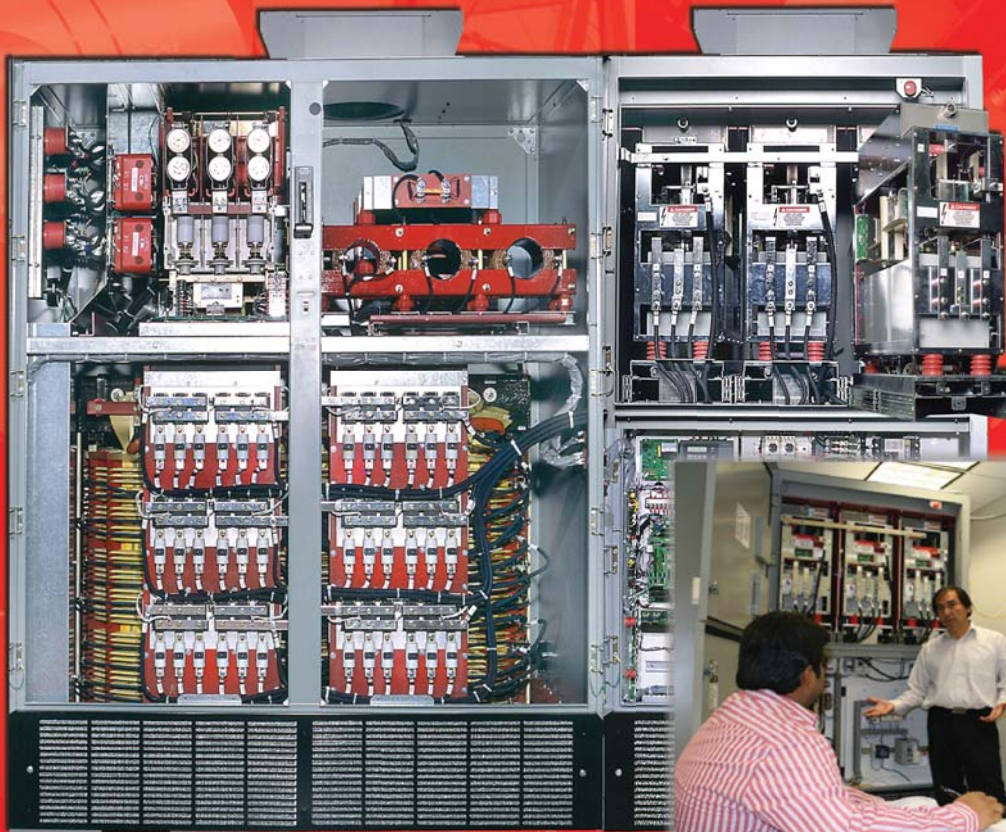


DURA-BILT 5i MV

Maintenance Training



Location: Roanoke, Virginia

- 4-day training course for engineering and maintenance personnel
- Drive system hardware and software operation, maintenance and troubleshooting
- Hands-on classroom and lab exercises
- Presented by experienced industry service engineers

Students will learn:

- ✓ Fundamentals of operation for the Dura-Bilt5i drive and motor system
- ✓ To monitor, maintain and troubleshoot the Dura-Bilt5i drive system
- ✓ To recognize normal and abnormal drive system operation
- ✓ The terminology and meaning of the diagnostic messages
- ✓ To replace and reconfigure components
- ✓ To quickly diagnose and identify externally-connected equipment failures

TMEiC
We drive industry

Who should attend?

Engineers and technicians involved in the operation and maintenance of a Dura-Bilt5i Medium Voltage drive system will benefit from this course.

This class does not cover installation and commissioning of the equipment.

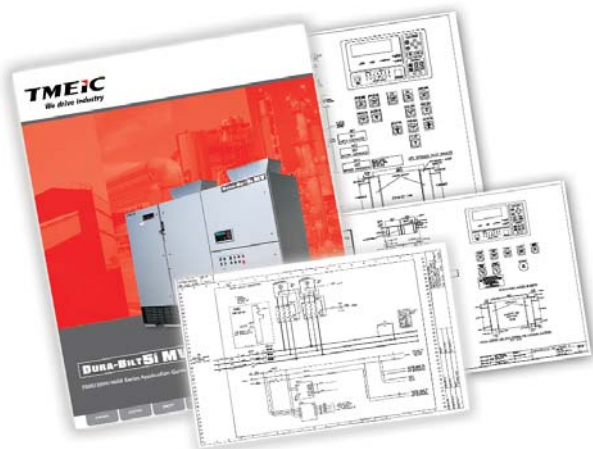
Prerequisites

- A basic working knowledge of 3-phase electricity, variable speed drives and motors
- A working knowledge of sound safety procedures on MV equipment
- Reasonable personal computer and Microsoft® Windows® skills
- Course materials will be presented in English

Student Materials

A notebook with paper and electronic copies of the following materials are part of the course package:

- Dura-Bilt5i MV Technical Manuals
- Dura-Bilt5i MV Product Application Guide
- Physical outline drawings
- TMEIC Drive System Elementary and Drive Interface drawings



For more information please contact:
Andrew Ricker: 540-283-2091
Email: training@tmeic.com

Topics

Definition of Terminology and Acronyms

General Specifications and Ratings

Hardware Overview

- Function and designation of each component
- Part numbers
- Where to find the component on the electrical drawings
- Physical location of each component
- How to tell if this component is not functioning properly
- How to change out and replace the component
- How to configure the replacement component, if either hardware jumper or software download is required

Communication Networks - Maintenance and Supervisory

- Basic checking, testing, troubleshooting, replacing, and retesting techniques

Inspection and Maintenance Schedules

Maintenance and Diagnostic Tests

Protective Functions

Troubleshooting

- Faults and Alarms
- Unique Techniques
- Traceback

Grounding and Cabling

The Software Toolbox

- Windows OS Setup
 - Requirements
 - File Structure
 - File Transfer
 - Connecting & Communication with the Drive
- General
 - Menus
 - Windows
 - Trending
 - Animated Block Diagram
- Trending and Recording

Remote Connectivity

Spare and Renewal Parts

- What is recommended
- How to order

Contacting our 24/7 Customer Support Team

- Registration for Product Service Updates